

Sending Document via SOAP

SOAP WEBSERVICE



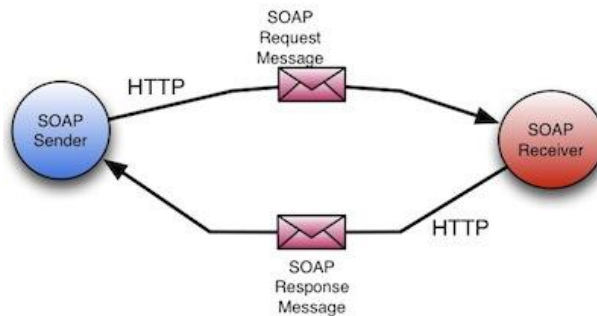
Sankaran | Attachment document send via SOAP web service | 12.01.2017

Contents

- What is SOAP..... 2
- What is SOAPUI?..... 2
- Pre-knowledge 3
- Pre-Requisites 3
- Process Flow 3
 - Convert document into binary format 3
 - Test a web service through SOAPUI..... 4

What is SOAP

SOAP (Simple Object Access Protocol) is a messaging protocol that allows programs that run on disparate operating systems (such as Windows and Linux) to communicate using Hypertext Transfer Protocol (HTTP) and its Extensible Markup Language (XML).



What is SOAPUI?

SoapUI is an open-source web service testing application for service-oriented architectures (SOA) and representational state transfers (REST). Its functionality covers web service inspection, invoking, development, simulation and mocking, functional testing, load and compliance testing.

Download link: <https://www.soapui.org/downloads/soapui.html>



SoapUI

In this article, we are going to learn about, how to send document via SOAP web service.

I took a simple example, to explain about this scenario.

So, I would like to document it here and let you know the same so that it will stay as a reference to everyone.

Tenant: SAP Business ByDesign.

Example: Creating Identified stock with Attachment folder via SOAP web service.

Scenario: Creating Identified stock in SAP Cloud Solution.

Pre-knowledge

1. Consuming SOAP Web service from SAP Business ByDesign

Pre-Requisites

1. Working Identified stock web service (.wsdl file)
2. SOAPUI Interface

In upcoming article, I will be dropping more info on SOAP web service's.

Process Flow

1. Convert a document into binary format
2. Test a web service through SOAPUI

Convert document into binary format

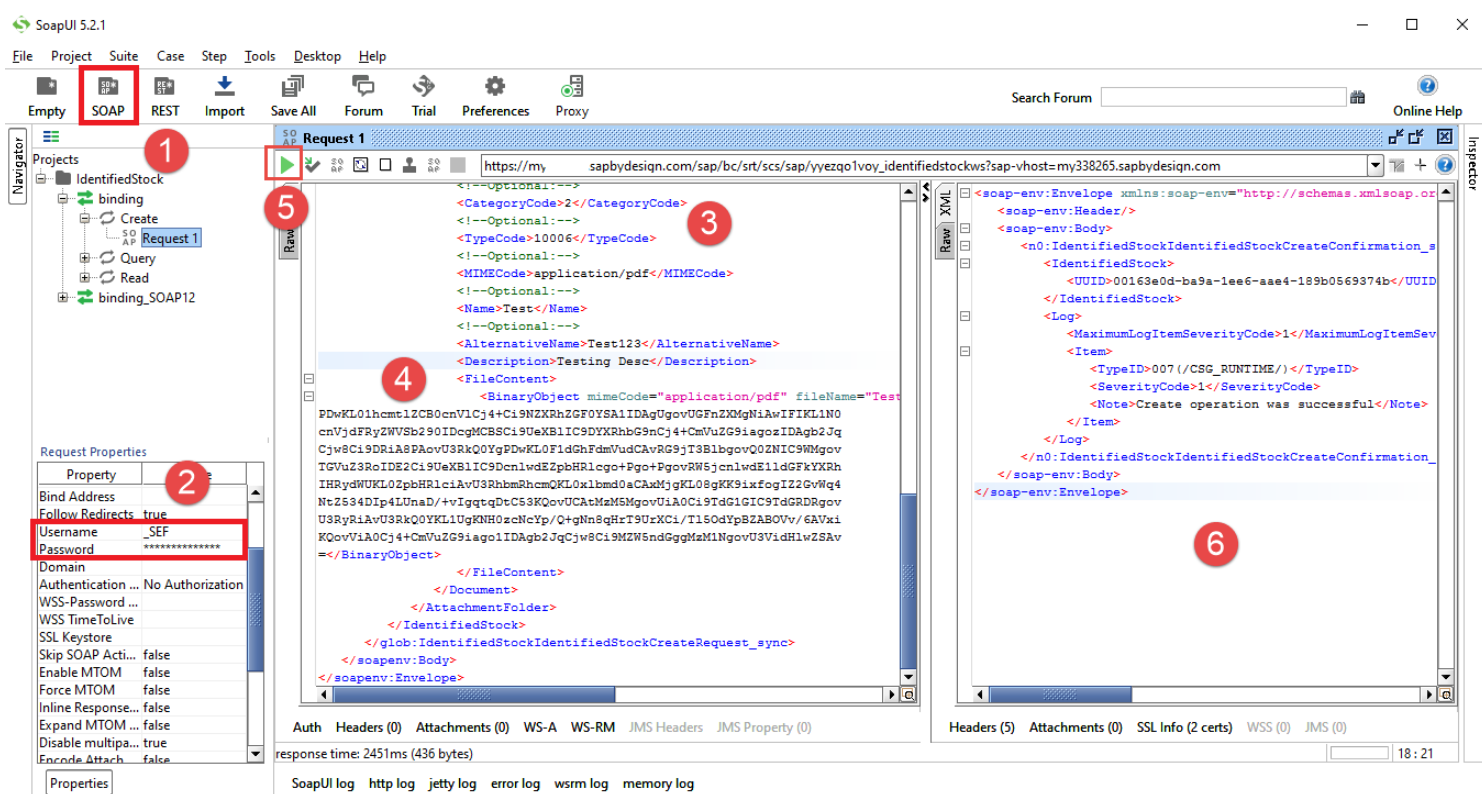
1. There are more websites are available to convert in BASE64 format.
(Example, <http://www.motobit.com/util/base64-decoder-encoder.asp>)
 1. Convert your file into Base64 format
 2. Copy the converted data to your local computer

For example, your base64 data looks like,

```
LnhtbFBLAQItABQABgAIAAAAIQCxP7hq2BwB3b3JkL3dlYINldHRpbmdzLnhtbFBLAQItABQABgAIAzNQcm9wcy9hcHAueG1sUEscy9hcHAueG1sUFBoAegcAAHO7BwAAAA==
```

Test a web service through SOAPUI

1. Create a SOAP project in SOAPUI with downloaded .wsdl file.
2. Enter Login details.
3. Give all necessary field values.
4. Copy & Paste your binary data into Document -> FileContent -> BinaryObject as shown in the below file.
5. Run your project.
6. Check the response.



We have learned about how to send attachment document via SOAP Web service, and in the future article, we will learn more about it. Don't forget to subscribe my blog and leave your comments to improve this article.