

Selected Document Type

ATTACHMENT FOLDER IN CUSTOM BO



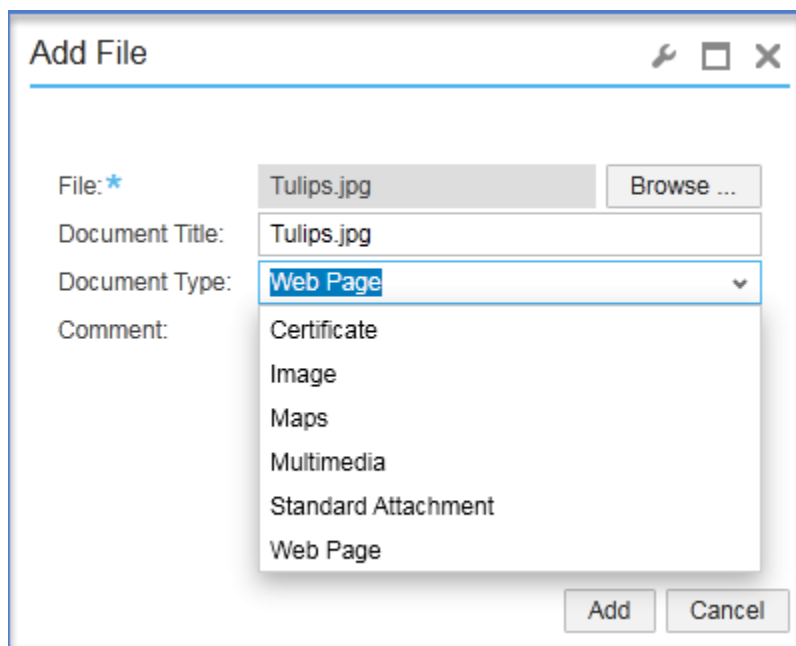
Sankaran | Selected Document Type | 12.01.2017

Contents

Overview.....	2
Process flow.....	2
Choose type code as Static Method	4
Choose type code as Dynamic Method	5
Testing.....	7
Display selected Documents in Front End.....	7

Overview

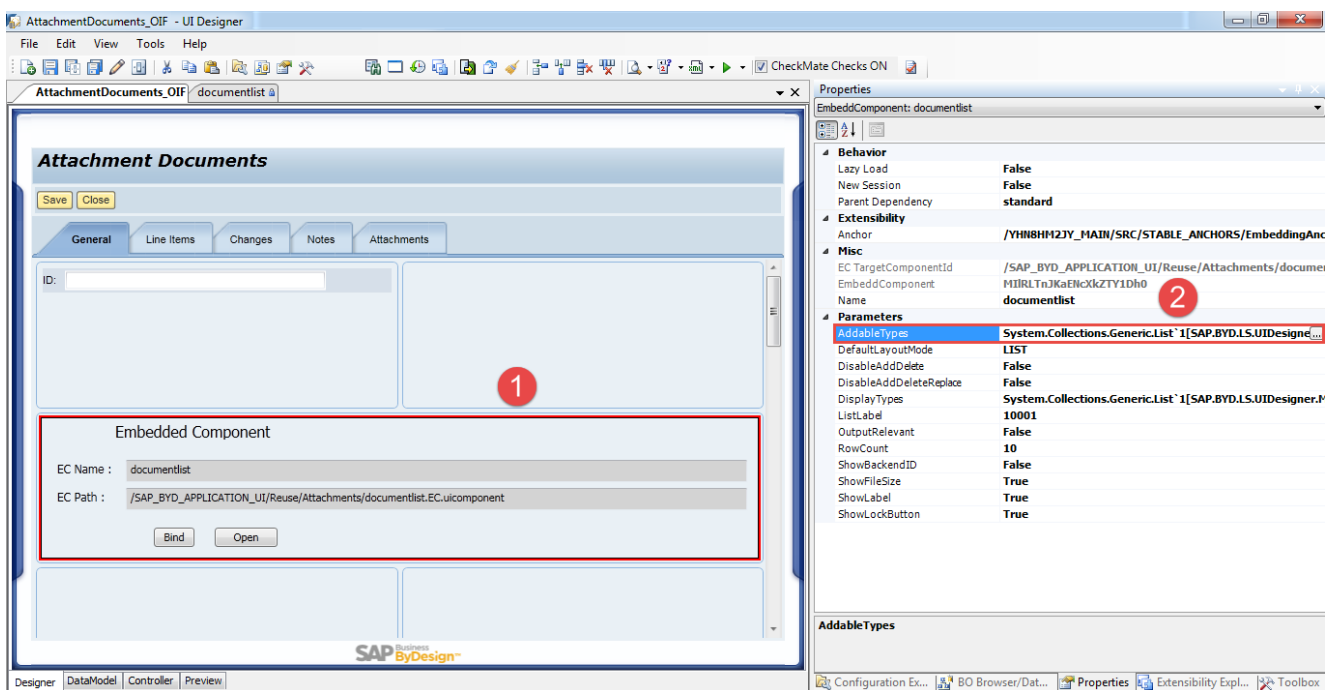
In the previous article, we learned about How to attach a document in custom BO. here, we are going to learn how to control document type in attachment folder.



Process flow

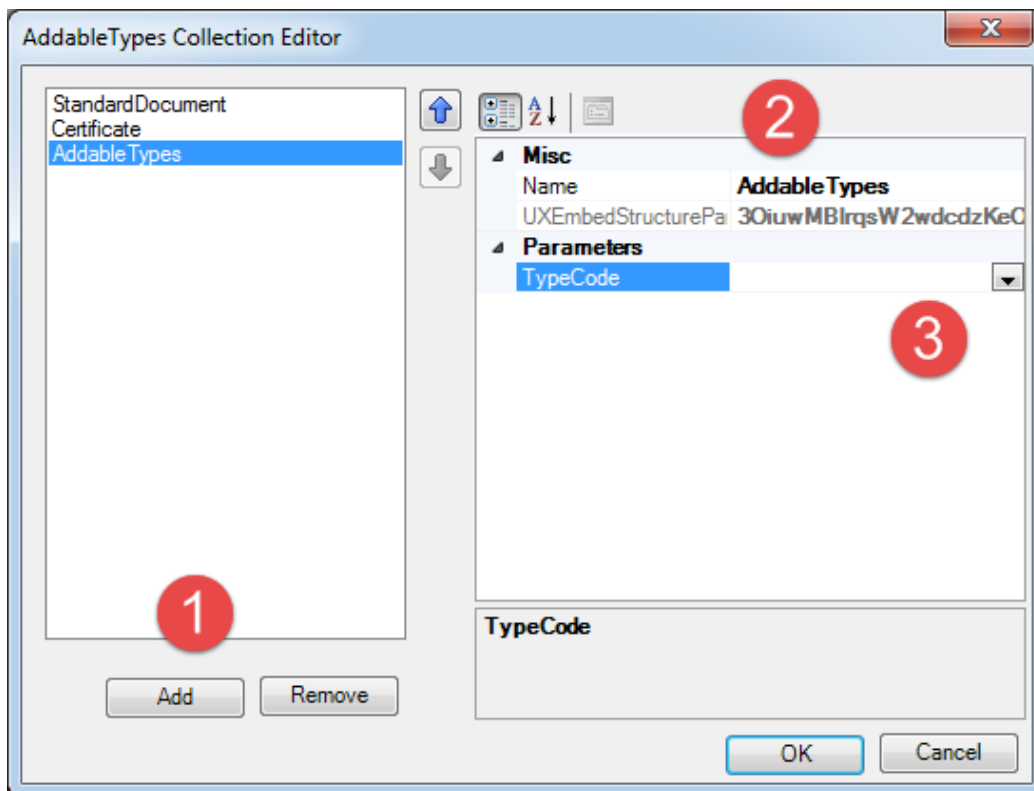
1. Open a screen in UI Designer which you added Embedded component.
For more information about the Attachment folder creation, visit <http://blog.sankaranss.com/2016/12/19/attachment-folder-in-custom-bo/>.
2. Configure as shown in below screenshot.
 - 2.1 Choose your embedded component.
 - 2.2 Click three dots next to the **AddableType** from properties.
 - 2.3 The **AddableTypes Collection Editor** dialogue box will open.

SELECTED DOCUMENT TYPE



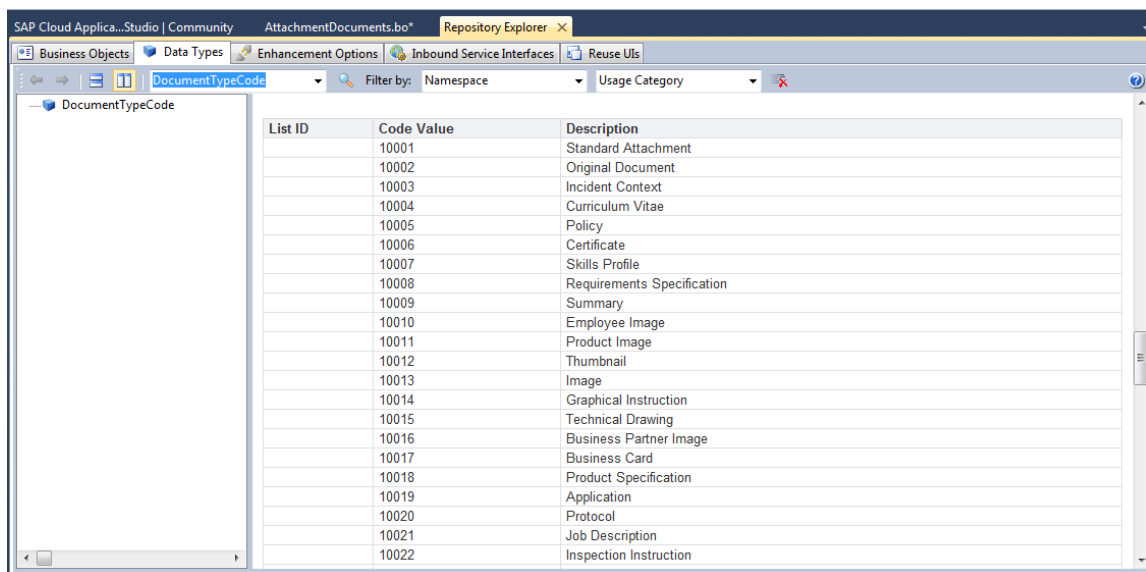
In the dialogue box,

- a. Click Add Button
- b. Enter your custom name for document type
- c. Enter the Typecode.



SELECTED DOCUMENT TYPE

You can find your type code in Repository Explorer as shown in the below screenshot.

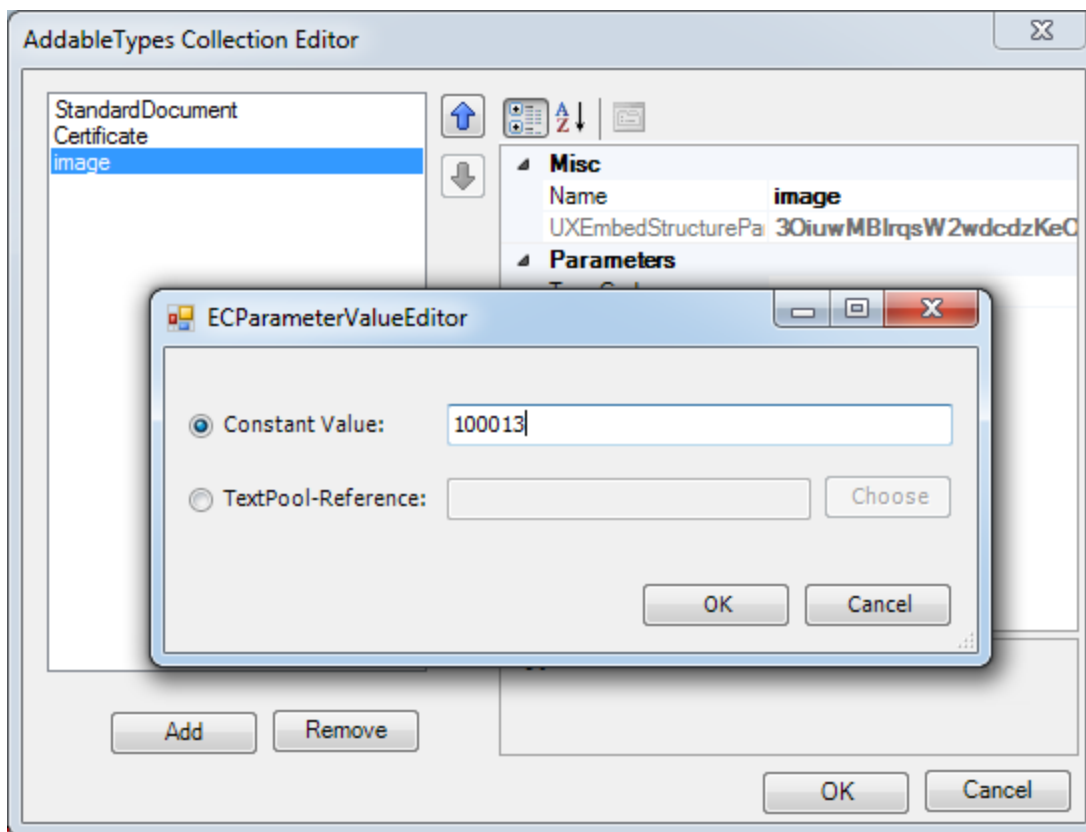


Some Important type codes are,

Type Code	Description
10001	Standard Attachment
10013	Image
10006	Certificate
10021	Job Description

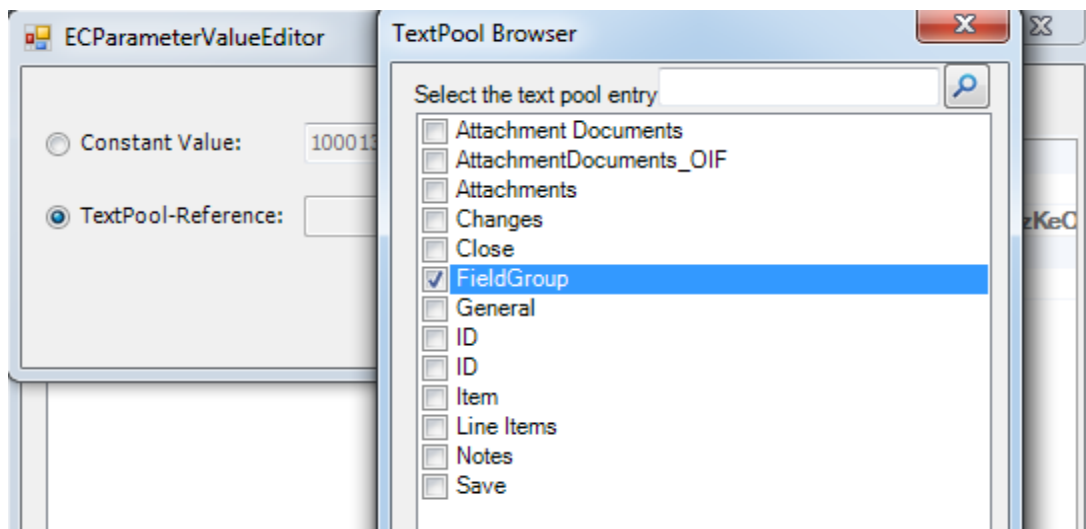
Choose type code as Static Method

Enter the Type code in **constant value** text field as shown in the below screenshot. Ex: 10013 for Image

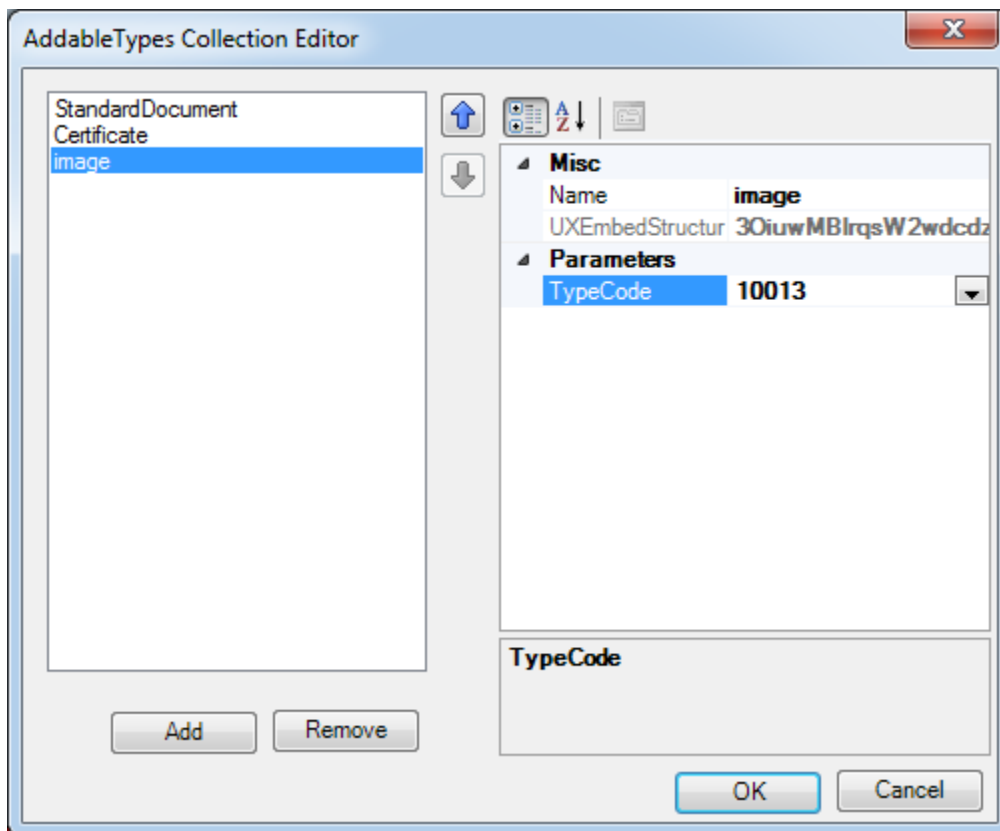


Choose type code as Dynamic Method

Choose the dynamic field form data model in TextPool-Reference as shown in the below screenshot.

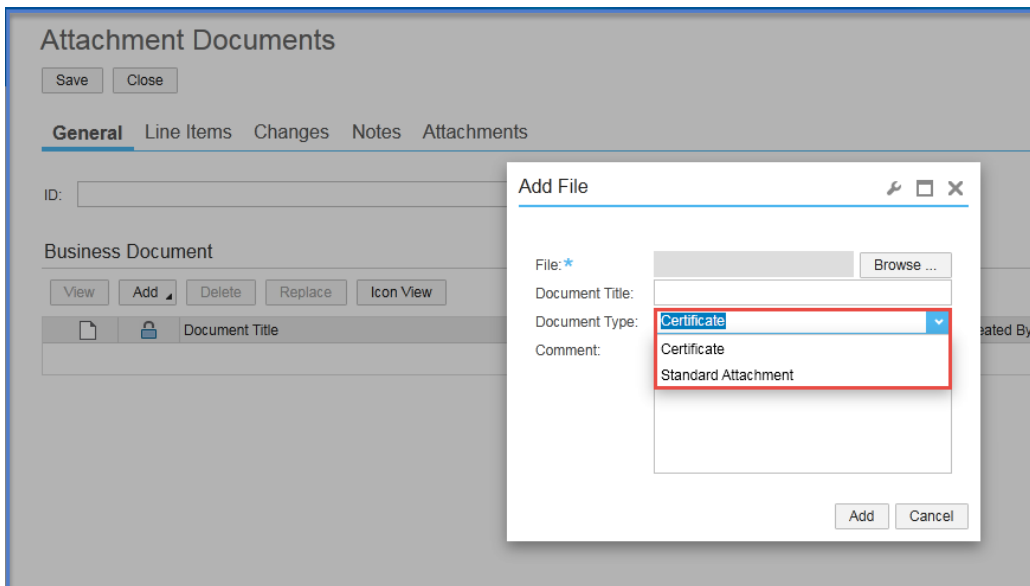


Finally, your window will look like, (Example, Static Type: Image)



Testing

1. Navigate to your screen, where the embedded component has been added.
2. Click Add button. Add File dialogue box will open.
3. In Document Type, Choose your document.



Display selected Documents in Front End

1. Go back to the UI Designer, Choose DisplayType from Property window.
2. Enter the Typecode, which you need to display on front end.

