

# Attachment Folder in Custom Business Object

ROOT LEVEL & NODE LEVEL



Sankaran | SAP Business ByDesign | [blog.sankaranss.com](http://blog.sankaranss.com)

## Table of Contents

Attachment Folder.....	2
Process Flow:.....	2
Create Custom Business Object .....	3
Generating Screen .....	3
Design Screen .....	4
Configure the data model view of the OIF Screen.....	4
Configure Attachment Folder in Root Level .....	4
Configure Attachment Folder in Root Level .....	6
Testing .....	7
Troubleshooting.....	8
Next Article .....	9

## Attachment Folder

An object that is used to store attachments that are related to a business document.

For example, a freight order or a forwarding order.

You use **Dependent Object** to store attachments that are related to a business document.

You can store the following attachment types:

1. **Files**

You can upload any kind of files that contain binary content.

2. **Links**

You can store links to external content that is accessible via a uniform resource locator (URL). For example, links to content on the World Wide Web or links to files stored on a server.

Here we are going to Implement Attachment Folder in root level and node level for custom Business Object.

So, I would like to document it here and let you know the same so that it will stay as a reference to everyone.

**Tenant:** SAP Business ByDesign.

**Scenario:** Implement Attachment Folder in root level and node level for custom Business Object.

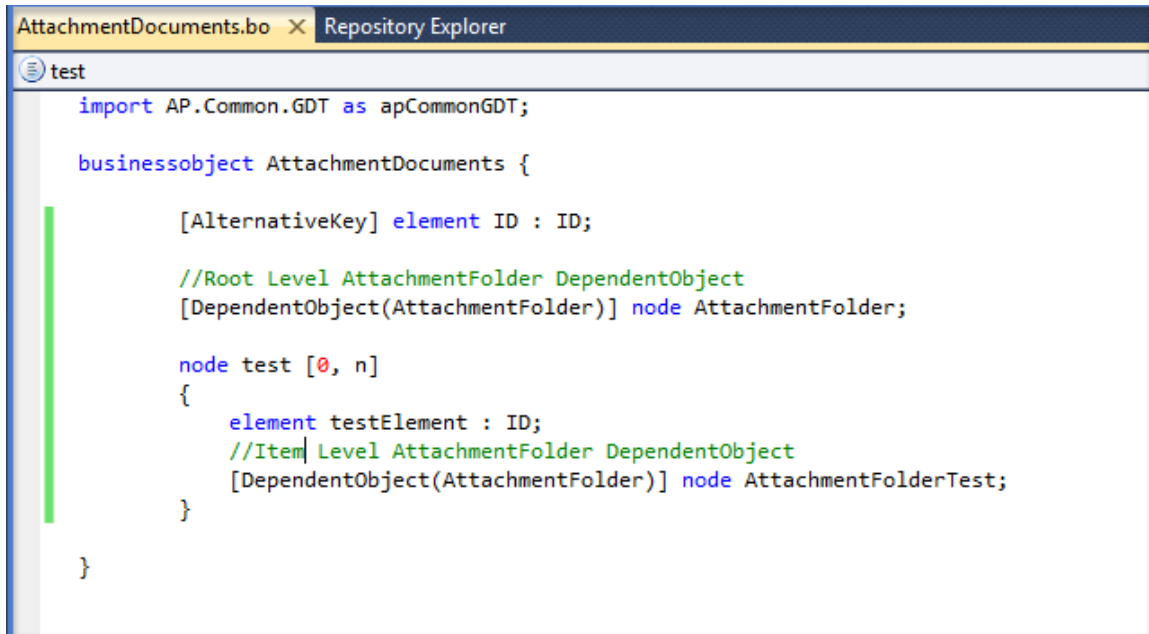
## Process Flow:

1. Create Custom Business Object
2. Generating Screen
3. Design Screen
4. Testing
5. Troubleshooting

## CREATE CUSTOM BUSINESS OBJECT

1. Create a custom Business Object **AttachmentFolder**.
2. Define elements/node as shown in the below screenshot.
3. Save and Activate.

For more information about the Custom Business Object creation, see <http://blog.sankaranss.com/2016/03/29/sap-byd-business-object/>.



```

AttachmentDocuments.bo X Repository Explorer
test
import AP.Common.GDT as apCommonGDT;

businessobject AttachmentDocuments {

    [AlternativeKey] element ID : ID;

    //Root Level AttachmentFolder DependentObject
    [DependentObject(AttachmentFolder)] node AttachmentFolder;

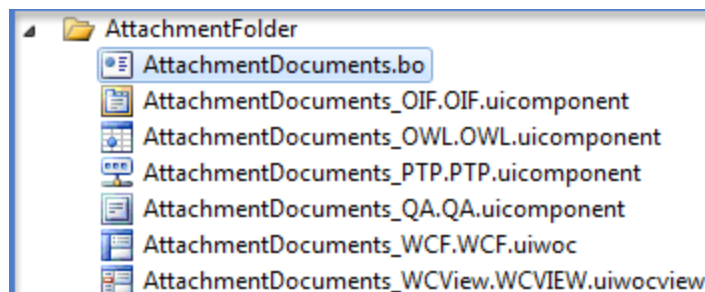
    node test [0, n]
    {
        element testElement : ID;
        //Item Level AttachmentFolder DependentObject
        [DependentObject(AttachmentFolder)] node AttachmentFolderTest;
    }
}
  
```

## GENERATING SCREEN

1. Right click on *BO name* -> *Create Screens*.
2. Generate all screen.

For more information about the screen generation, see <http://blog.sankaranss.com/2016/04/28/sap-byd-screen-types/>.

Your solution should look something like in the below screenshot.



## DESIGN SCREEN

1. Double-click the new OIF screen.

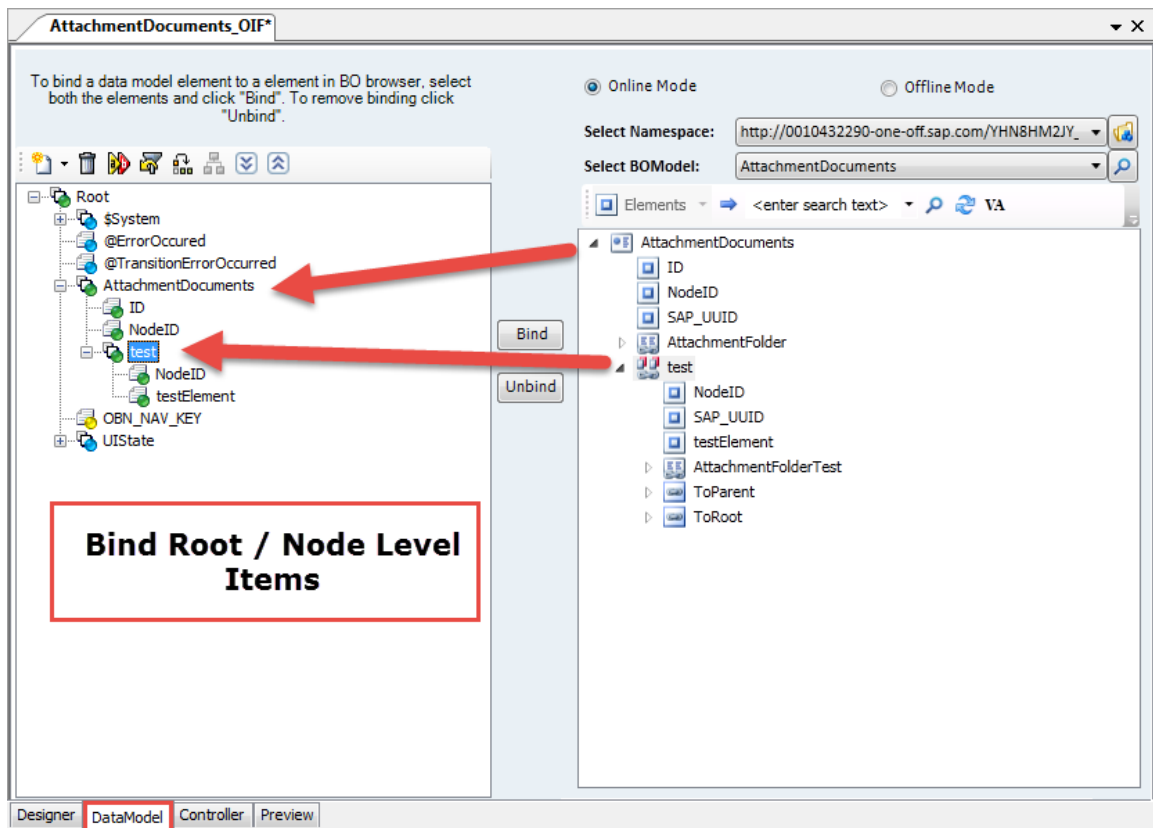
The OIF screen opens in the user interface designer.

For more information about the screen designing, see

<http://blog.sankaranss.com/2016/08/29/quick-activity-floorplan-sapby/>.

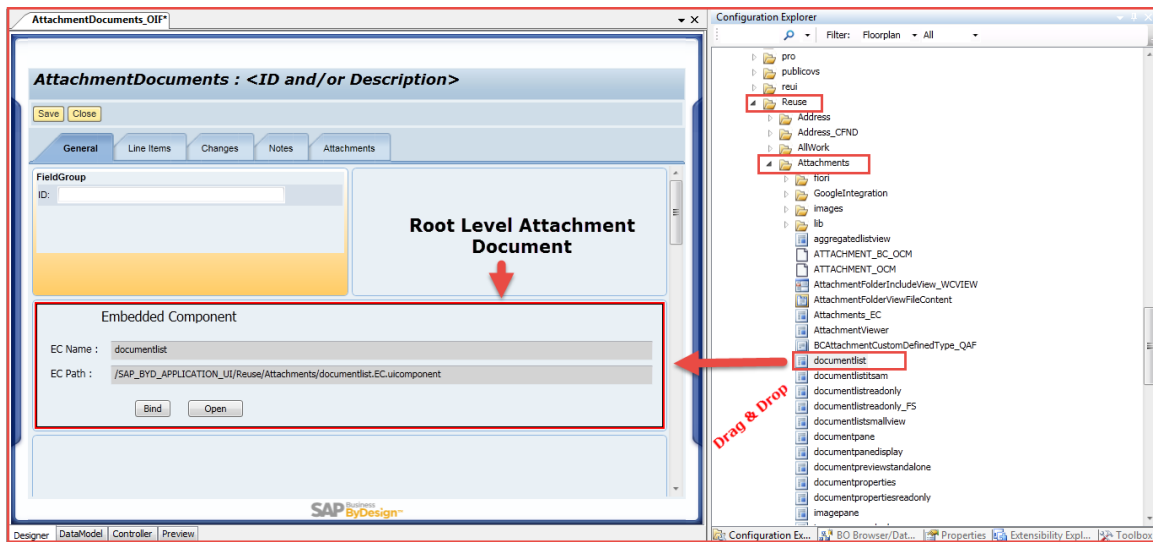
## Configure the data model view of the OIF Screen

Bind each of the fields to the required business object element as shown in the below screenshot.



## Configure Attachment Folder in Root Level

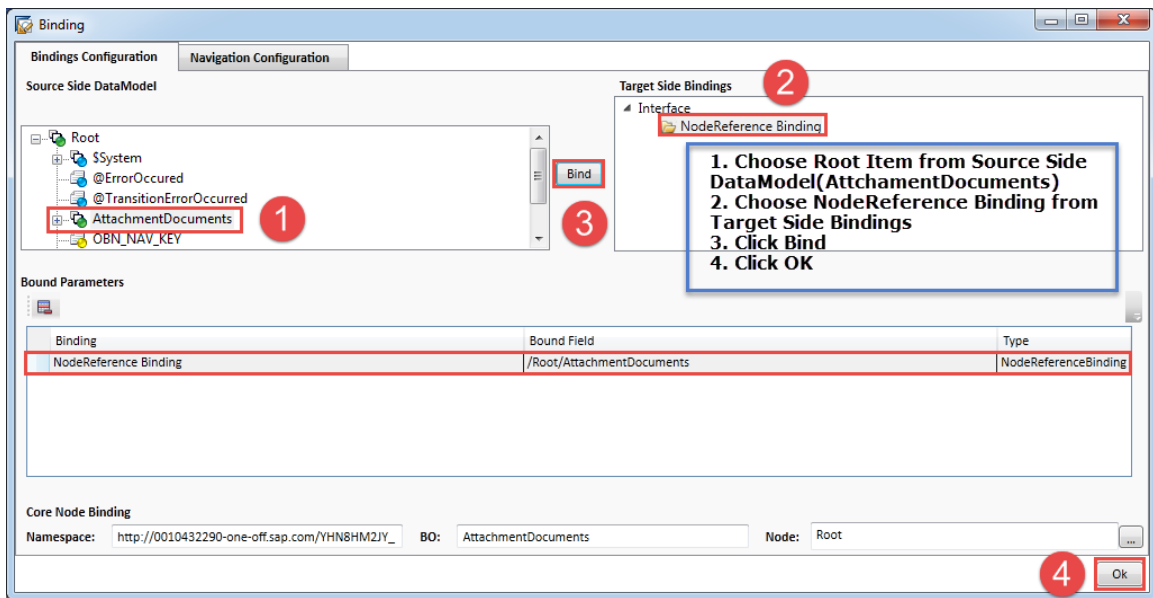
1. Drag and drop 'Documentlist' as follows
  - 1.1 Go to configuration window
  - 1.2 Open 'SAP\_BYD\_Application\_UI'
  - 1.3 Go to 'Reuse' folder
  - 1.4 'Attachment' folder
  - 1.5 Drag and drop 'Documentlist' on to the screen



2. Click Bind button.

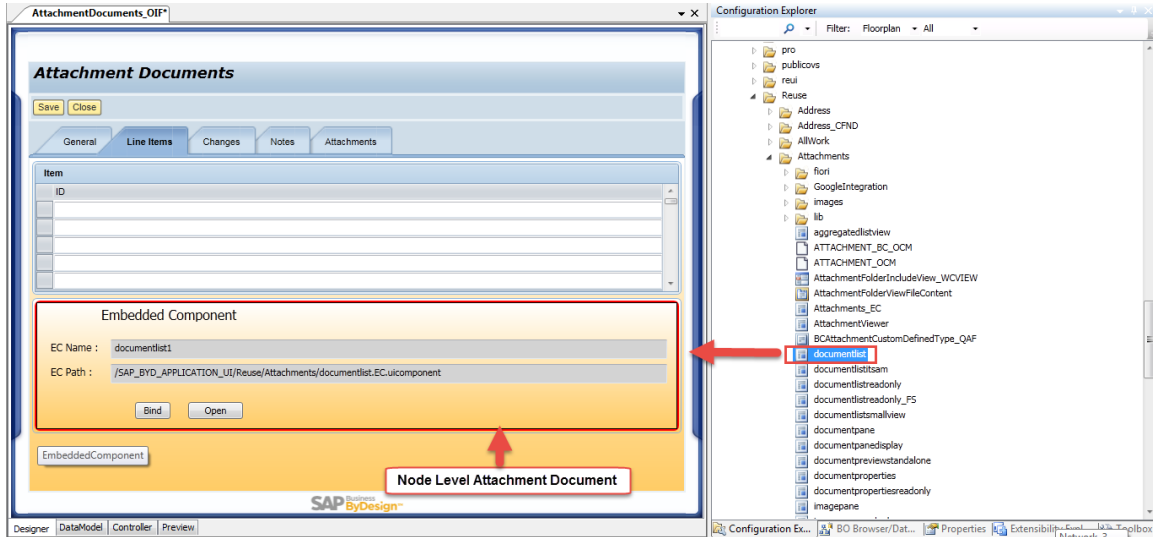
Binding dialogue box will open.

Configure binding with Root Level element as shown in bellow screenshot.



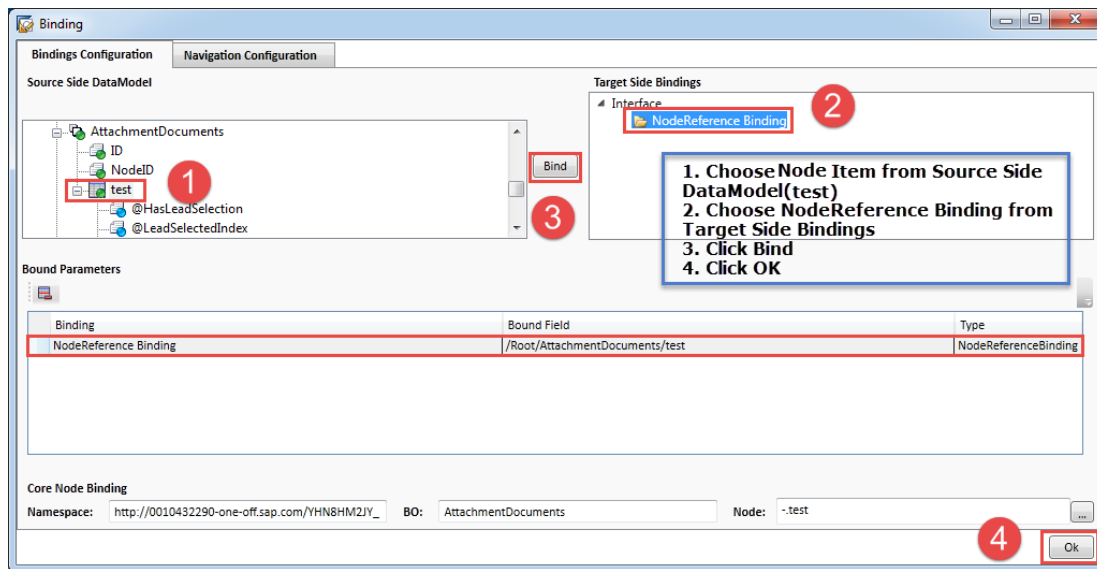
## Configure Attachment Folder in Node Level

1. Drag and drop 'Documentlist' as follows
  - 1.1 Go to configuration window
  - 1.2 Open 'SAP\_BYD\_Application\_UI'
  - 1.3 Go to 'Reuse' folder
  - 1.4 'Attachment' folder
  - 1.5 Drag and drop 'Documentlist' on to the screen



2. Click Bind button.

Binding dialogue box will open. Configure binding with Node Level element as shown in bellow screenshot.



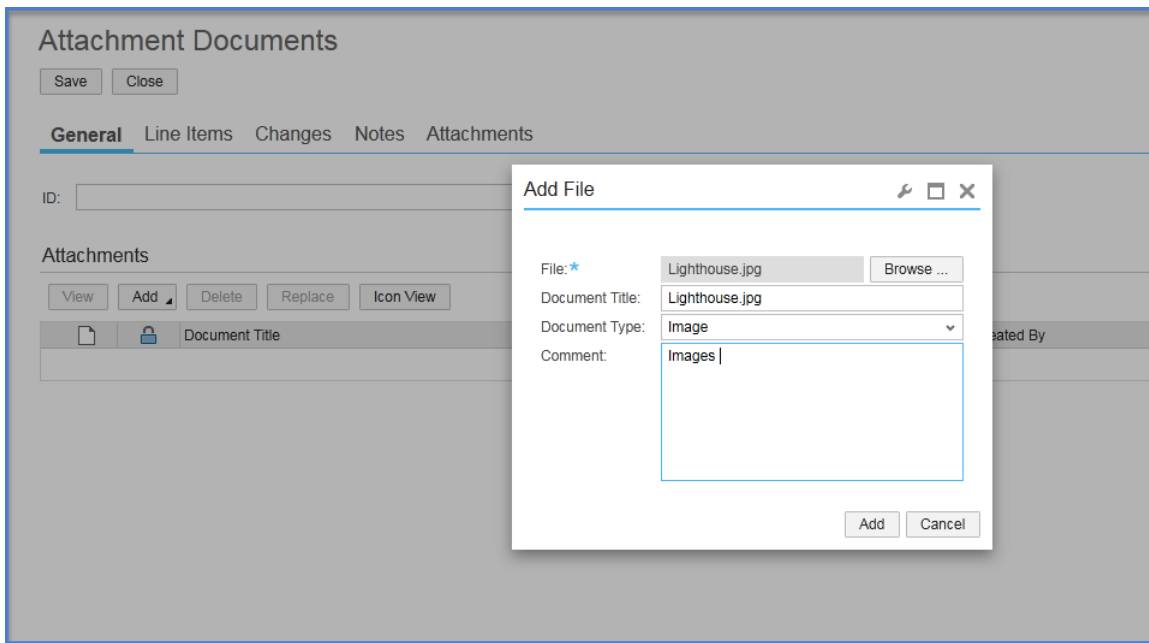
3. Save and Active Screen.

## TESTING

1. Logon into SAP Business ByDesign as a Business User.
2. Navigate to Attachment Folder work center. (Custom Development which we developed)
3. Click New -> View All (Navigate from QA Screen to OIF Screen)

### Root Level Attachments

1. Click Add -> File from Attachments.  
**Add File** window will open.
2. Browse file.
3. Choose Document Type.
4. click Add button.



### Node Level Attachments

1. Navigate to Line Items -> Add Files in attachments.  
**Add File** window will open.
2. Browse file.
3. Choose Document Type.
4. click Add button.



Attachment Documents

Save Close

General **Line Items** Changes Notes Attachments

Item

ID
ITEM1

Attachments

Download Add Delete Replace Lock Icon View

Document Title	Document Type	Created On	Created By	File Size
Chrysanthemum.jpg	Web Page		Mugunthan ERPL	859 KB

Details: Chrysanthemum.jpg

Document Title:	Chrysanthemum.jpg	File Name:	Chrysanthemum.jpg
Document Type:	Web Page	Created On:	
Comment:	ITEM1	Created By:	Mugunthan ERPL
		Changed On:	12/19/2016 2:00 AM
		Changed By:	Mugunthan ERPL
		Locked By/Since:	

## TROUBLESHOOTING

1. Disabled Add Button:

Attachment Documents

Save Close

**General** Line Items Changes Notes Attachments

ID:

Attachments

**Disabled**

View Add Delete Replace Icon View

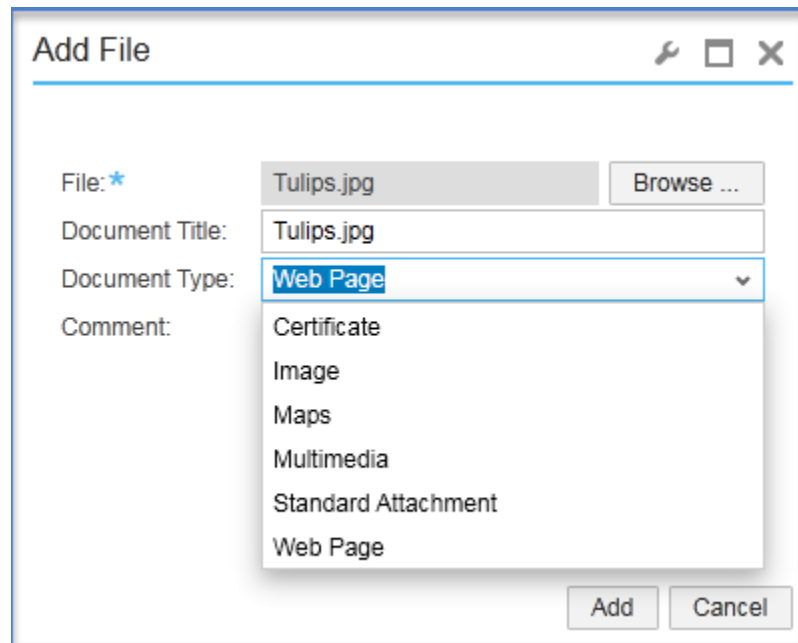
Document Title	Document Type

### Solution:

1. Don't run OIF screen directly from UI Designer. First run QA Screen, then navigate to OIF screen from QA Screen.
2. Check Binding properties.

## Next Article

In future article, we will learn how to display only selected **Document Types** in **Add File** Window.



If you like to add some points with this article, kindly leave your points in comment box. Don't forget to subscribe it.